

# BrushStrokes

Volume 18, Issue 1

MEMBERS NEWSLETTER

Spring, 2007



## OIL PAINTERS of AMERICA

Dedicated to the Preservation of Representational Art

A Not-For-Profit Corporation  
Established in 1991

### 2006 WESTERN REGIONAL SHOW – EXCEPTIONAL!

This year's Western Regional Show was held at the Lee Youngman Gallery in Calistoga, California, October 7 – October 31, 2006. OPA members who were able to attend were in for a real treat. Fifty members and their guests enjoyed a very special dining experience at the Silver Rose winery on Friday evening before the exhibition: a sumptuous, candlelit dinner among the large, cavernous oak wine barrels.

On Saturday, before the opening of the exhibition, Signature member Paul Youngman, who has an intimate knowledge of the area, directed members to some of the finest plein air painting sites in the valley. Beautiful weather and outstanding scenery made for a memorable day of painting for everyone. Excitement mounted as the opening exhibition on Saturday evening got underway. Guests were treated to a beautiful assortment of hors d'oeuvres and sampled some of the area's finest wines.

As always, the Western Regional members provided collectors with a strong selection of quality paintings to choose from and this year's Juror of Awards, prominent Master Signature member William Scott Jennings, had quite a challenge in selecting the award winners.

Many thanks to Lee and Paul Youngman, for their gracious hospitality and to their hard working staff: Carol Cannon and Joan Caputi.



Best of Show Painting  
"Square Dancing" by Clement Kwan

This year's Western Regional Exhibition winners are:

**Best of Show-** Clement Kwan for "Square Dancing"- \$2,000 funded by OPA

**Southwest Art Award of Excellence-** Teresa Dong for "In Sausalito Bay"- One-third page advertisement valued at \$1,700.

#### CONTENTS

Western Regional Show . . . . .	1
Sixteenth National Exhibition.....	4
Masterstrokes . . . . .	6
Notes From Your Board . . . . .	9
Painting Our Future . . . . .	10

**Art of the West Award of Excellence-** Ariana Richards for "Forget Me Not" - Half-page advertisement valued at \$1,650.

**Award of Excellence- Best Master Signature Member-** Zhiwei Tu OPAM for "Who Are You?"- \$1, 500 funded by OPA.

**Award of Excellence– Best Signature Member-** Jean Chambers OPA for "Time Is On Your Side"- \$500 funded by OPA

**Award of Excellence– Best Associate Member-** Mark Boyle for "A Break In The Clouds" - \$500 Funded by OPA

**Lee Youngman Award of Excellence-** Kurt Anderson OPA for "Late Light – Tanque Verde Cliffs"- \$500.



"In Sausalito Bay" by Teresa Dong won the Southwest Art Magazine Award of Excellence

## CLEMENT KWAN THE WINNER

Clement Kwan's figurative paintings are filled with light, color, joy and movement. "I like my paintings to express happiness. I use my artistic skills to create paintings that will give people joy and hope ... my tool for helping to make the world a better place."

Born in China, Clement had his art training through the Chinese government's fundamental art-training programs in Guangdong, China. Prior to his immigrating to Canada in 1979, Clement worked for a stage company painting large background scenery



pieces. In Canada, Clement continues to pursue his goal of becoming a good fine artist. "For more than a decade, I have been going to a local art studio

for weekly life drawings. Study from a live model improves my figurative works. I buy and study art books written by the current top artists, visit art shows, take workshops and follow the advice from my mentor, Mian Situ OPAM. In order to gain further knowledge, I am involved with many art clubs. In addition, I use the internet and DVDs to learn more painting techniques."

Clement paints mainly in oils, combining impressionism with realism in his painting. He is a member of the Island Illustrators Society of Victoria Canada and is a Signature Member of the Federation of Canadian Artists.

---

## JUROR OF AWARDS STATEMENT

By Wm. Scott Jennings OPAM

Many thanks to OPA for inviting me to be the Juror of Awards for the 2006 Western Regional Exhibition. While I have juried many shows in the past, this was the first time I have juried an OPA Show, and I was struck by the exceptional quality of the pieces being exhibited by our Western members.

I tried to base the judging as objectively as possible, keeping in mind a few ba-

sic parameters: good design, good sense of color, use of light and color, and finally whether the subject matter was handled well.

Upon entering the gallery, I first walked through the show making a note of those paintings that stood out on first glance. Then I went through a second time taking a closer look at each painting using the parameters outlined above. Finally, from there I came up with a short list, and then asked myself whether there was anything that might disqualify a certain

piece. It was at that point I was able to compile the list of award winners.

I felt that the Best of Show Award given to Clement Kwan for his painting "Square Dancing" was an exceptionally strong piece that met all of the parameters mentioned above and caught my eye from the very beginning.

I want to thank Lee and Paul Youngman for their hospitality. I enjoyed talking with many wonderful OPA members over the weekend and hope to have the opportunity to cross paths again.



"Late Light—Tanque Verde Cliffs" by Kurt Anderson OPA won the Lee Youngman Galleries Award of Excellence.



"Who Are You?" by Zhiwei Tu OPAM won The Award of Excellence-Best Master Signature Member funded by OPA.



"Time Is On Your Side" by Jean Chambers OPA won the Award of Excellence-Best Signature Member funded by OPA.

## 2006 WESTERN REGIONAL EXHIBITION



OPA members and guests dine in style at the Silver Rose Winery in Calistoga.



Master Signature member Nancy S. Crookston painting at Summers Winery.



Good friends Joyce Pike OPAM and Karla Bogard find an opportunity to catch up with one another.



OPA member Fred Quitta (right) enjoys a fun evening with his wife, Linda, and friends Mary and Joe Machado.



Michael Mao and his painting "Quietude II".



Enjoying the evening are Board of Directors: William Schneider OPA, Joyce Pike OPAM (Chair, Master Signature Committee), Ruth Challacombe OPA, and Neil Patterson OPAM.



Ariana Richards and Juror of Awards William Scott Jennings OPAM next to Ariana's award winning painting "Forget Me Not"



Linda Rogers and her painting "Los Olivos Farm"



# 16<sup>TH</sup> NATIONAL JURIED EXHIBITION

## WHISTLE PIK GALLERIES, FREDERICKSBURG, TEXAS

### OPENING WEEKEND – MAY 10 – 13, 2007

Plans for the opening weekend of OPA's 16<sup>th</sup> National Juried Exhibition are well underway – and what a weekend OPA and Whistle Pik Galleries have planned for OPA members and their guests! The weekend will open with a fun and casual welcome reception Thursday evening at the Fredericksburg Inn.

This year's Juror of Awards, Quang Ho OPAM, will begin Friday's events with a three-hour demonstration. This young Master Signature member already has a strong following among artists and collectors alike and is considered one of the top representational artists in the country today. OPA is honored to have renowned artist and Master Signature member David Leffel as a part of this year's events. Mr. Leffel has been acclaimed as a "20th Century Old Master" and will talk "Up Close and Personal" with *Art of the West Magazine's* Tom Tierney about his remarkable art career and what he has learned over the years. Afterwards, members in attendance won't want to miss the panel discussion featuring owners and directors from some of the country's top galleries, including this year's host, Tim Taylor of Whistle Pik Galleries. Other galleries that will round out the panel discussion include: Alison Collins, Gallery Director, Tree's Place, Orleans, Massachusetts; Suzanne and Jerry Owens, Owners, River Bend Fine Art, Marble Falls, Texas; Gary and Sandy Sievert, Owners, Sage Creek Gallery, Santa Fe, New Mexico and Steve McClennahan, Owner, Snowfire Gallery, Fredericksburg, Texas.

Two receptions will be held during the opening weekend. The first will take place on Friday evening, May 11, and is geared towards the artists, their fami-



lies, and sponsors in attendance. The reception will begin at 7:00 p.m. at Whistle Pik Galleries, where artists will have the opportunity to preview the exhibition and will end with the awards reception at the Nimitz Event Center beginning at 8:15 p.m. A reception geared towards collectors will take place on Saturday evening, May 12, 2007, from 5:00 p.m. to 7:00 p.m. at Whistle Pik Galleries, followed by an old fashioned Texas barbeque held at the Fredericksburg Inn. This reception is open to collectors, artists, sponsors and the general public.

Saturday morning will feature demonstrations by a select group of artists: already confirmed is Bob Rohm OPA who returned to his true passion of painting after a long and successful career in the film and video production business.

Other not-to-be-missed events include a Saturday afternoon presentation by William E. Bush, owner of Fredericksburg's Artist School and a Certified Public Accountant. Mr. Bush will speak to members on "*The Business Side of Art.*" With over 30 years of experience, Bill brings a wealth of knowledge and practical information to the art community. His presentation will include discussion on various subjects facing the artist today,

such as: agent relationship, gallery representation and other means of selling art, insurance, shipping, tax issues, gallery commissions, advertising, how to price your work, and what can you expect to make.

Sunday is reserved for several plein air painting opportunities for artists to choose from including: Enchanted Rock State Natural Area, Becker's Vineyard, Wild Seed Farms, and Sauer-Beckman Living History Farm at the Lyndon B. Johnson National Historical Park.

For those who aren't interested in painting on Sunday, OPA has arranged a group tour of the Lyndon B. Johnson National Historical Park which includes LBJ's ranch. This 2,700 acre ranch is still a working ranch, as requested by Johnson when he donated a portion to the park service. The LBJ Ranch saw many visitors during Johnson's term in office including such notable figures as President Harry S. Truman, President Richard M. Nixon, President-elect John F. Kennedy, and Reverend William F. Graham.

Finally, for members who can get down to Fredericksburg early, the Fredericksburg Artist school has lined up some of OPA's most well respected artists for workshops including Master Signature members C.W. Mundy, Neil Patterson, and Signature member Jean Chambers. Please note: These are ancillary events to OPA's Schedule of Events and require separate registration. Details on how to register for one of these workshops can be found on the Fredericksburg Artist's Schools website at: <http://www.fbgartschool.com>.

## MAJOR PARTICIPANTS IN NATIONAL EXHIBITION



**Quang Ho OPAM**

Quang Ho was born on April 30, 1963, in Hue, Vietnam. He immigrated to the United States in 1975 and is now a U.S. Citizen. His artistic interest began at the early age of three and continued through grade school, high school, and art school leading him to a very exciting and successful painting profession. In 1980, at the age of 16, Quang held his first one-man-show at Tomorrows Masters Gallery in Denver Colorado. The exhibit was a smashing success for the high school sophomore.

Life for the Quang family began to settle into a more steady rhythm until 1982, when Quang Ho's mother was killed in an automobile accident. Nineteen-year-old Quang Ho suddenly found himself in charge of his four brothers and one sister. Quang managed to keep the young family together, surviving for the next two years on an \$18,000 insurance settlement from his mother's death and a \$300-a-month welfare stipend.

That same year, Quang attended the Colorado Institute of Art (CIA) on a National Scholastics Art Awards Scholarship. At CIA, Quang studied painting under Rene Bruhin, whom Quang cred-

its with developing the foundation for his artistic understanding. Ho graduated from the Colorado Institute of Art in 1985 with Best Portfolio Award for the graduating class.

Like many artists needing to make a living, Quang Ho began his art career as a freelance illustrator. At night, however, he would continue to pursue his true passion for painting. An art dealer, Mikkel Saks, discovered his talent and promoted him in his gallery, which led to much success. Quang also teaches at the Denver Art Students League

### **David Leffel OPAM**

*"Art is an expression of unity and universality, not temporal factors. It is a means of reaffirming life, of overcoming confusion..."*

David A. Leffel was born in Brooklyn, New York in 1931. He was only four years old when he drew his father's hat. After that first drawing, he and friends often competed to see who could draw the best comic book characters.

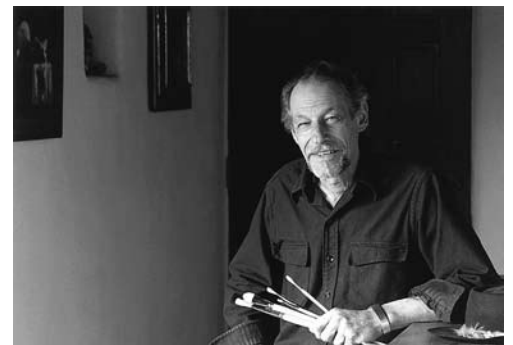
He enrolled in Parson's School of Design after high school where he studied advertising and design. Following a series of jobs as a commercial artist he left the constraints of business and commercial art to pursue his own personal ideas.

In 1959-1960, Leffel studied at the Art Student's League in New York City. There he developed the chiaroscuro technique that has led to his frequent tribute as a "20th-century old master." In 1972 Leffel returned to the Art Students League as an instructor.

David A. Leffel paints in the classic tradition of the early Dutch and Flemish such as Rembrandt and Chardin. Compositions are inspired by the human form and still lifes. The quality of light and its relationship to the objects under observation are most important to him. Known for his visual clarity, David encourages his students to paint from life in order to perceive each subject differently from the next. Well versed in technique, he transcends method painting in order to convey dimensionality, quality of surfaces and illumination.

His work has been exhibited in numerous important group shows including Artist of America, National Academy of Western Art (winning three Gold and one Silver Medal), the First American Art Exhibit in Beijing, China and the National Academy of Design. He has written and been included in a number of books and publications. "An Artist Teaches," his current book, was released January 2004.

**Many thanks and credit to: Totals Art Gallery in Taos, New Mexico and Wendt Gallery in Laguna Beach, California.**



**David Leffel OPAM**

## MASTERSTROKES

### QUICK PORTRAIT SKETCHES FROM LIFE OR PHOTOGRAPHS

By Joyce Pike OPAM

Quick portraits of no more than two or three hours make wonderful exercises. The more you do the better you get. Start with a good sketch; the more familiar you are with your model the better your painting will be. Use pencil or vine charcoal to do your preliminary sketch. (Figure 1) When you feel completely satisfied with your drawing, proceed to color. Remember, composition has the same importance no matter what the subject. Your darks, lights, and mid-tones need to be perfect or your painting will be flat and lack form.

**Color** Flesh tones on most people will be much the same with the exception of black or dark brown skin. Think of skin as various shades of grey with stronger color overtones. For these illustrations, I used a simple red and green color combination, plus white to lighten. Any color and complement will work for flesh tones depending on the dominant hue. My choice of red and green is the easiest to work with. When mixing flesh tones, don't mix with several different colors. Always try to use as few as possible.



Figure 1

The misconception that flesh is a certain formula is wrong. There are many different approaches to painting flesh, none of which are wrong.

Many years ago when I first started painting portraits, I had a teacher that knew how to teach basics. He had me work only in black and white until I understood form. This teacher was Sergei Bongart and I was 21 years old. Then when I graduated to color, I was allowed only two colors – red and green. Using a true red (cadmium red light) and a true green only, I was forced to work out my various shades of flesh tones (again, using white to lighten). I do use a few more colors when needed now when certain hues are called for such as reflected lights.

Veredian green is also a good green to use, but stay away from thalo green because it is difficult to control. Alizarin Crimson and sap green make a good dark for dark skinned people. If darker darks are needed, I add a bit of ultramarine blue. For the light flesh, I usually go warmer with cadmium red light grayed with thalo yellow green (Grumbacher).

Anytime you mix color and complement, you will have grey, as the features become more prominent such as cheeks, nose, ears, chin, etc. You will add more warm with the addition of white to lighten to the desired degree.

I am not telling you red and green are the best colors to use for portraits. I just find these two colors easy to work with. Many painters use yellow ochre as a grey base adding more color where needed. This works for many. I don't use it because I enjoy mixing all my greys. Try using combinations of color and complement to make experimental grey flesh tones. You will not only enjoy the exercise, but you may find a favorite combination for yourself.

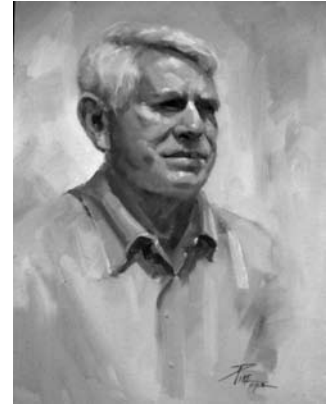


Figure 2

Mike Alonzo is a dear friend and fellow artist. We spend many hours talking art or painting together. It is always great to have a friend you can trust to give a suggestion when needed. You know the old saying – it takes two to paint a painting, one to paint and the other to tell you when to quit.

As you can see, Mike has a strong jaw and angular features. (Figure 2) His complexion leans to the warm with red and orange highlights. Painting Mike was easy to do from a photograph because I was already familiar with his skull structure. Reflected light is necessary to complete the fine area of light and shade necessary to make the object turn. Reflected lights are almost always the reverse temperature of shadow, just keep them subtle.

Backgrounds can be a problem for some especially when using a photograph. There is usually something seen in the background that you don't want in your painting. Plan your darks carefully to balance a good composition. Keep your backgrounds simple. You want to get the feeling that there is air behind your model. Don't forget your darks, lights and mid-tones are your composition. Don't get carried away on painting people and forget this important part of any painting.



## CONGRATULATIONS TO OPA'S NEW 2006 MASTER SIGNATURE MEMBERS

OPA has recently bestowed its highest status – Master Signature member – to Jeff C. Legg of Pineville, Missouri and Jeffrey Watts of Encinitas, California.

These two individuals join a select group of artists who have consistently demonstrated exceptional merit and accomplishment in representational

oil painting. The Master Signature Advisory Committee, comprised of five Master Signature members, is charged with reviewing candidates' applications for this status.



**Jeff Legg OPAM  
Pineville, Missouri**

Jeff C. Legg's artwork is often described as "masterful, ethereal, and timeless." Every painting is an intimate conversation between artist and viewer. One believes they can reach into the

scene and perhaps, grasp a medieval helmet, feel the fuzz on a peach, or actually stir the air.

Focused primarily on still life, Legg is equally adept and comfortable with figures, portraits, and landscapes, either in the studio or "en plein air." Painting "from life" is at the core of his artistic sensibility.

Legg creates works that embody superior craftsmanship and the soulfulness of a silent moment captured in time, yet stirring with life. "If one of my paintings evokes an emotional response from the viewer, perhaps a sense of awe or mystery, I feel that I've succeeded in communicating something of value, something good, or even spiritual."

Born in 1959 in Joplin, Missouri, Legg's artistic interests developed in childhood and by age 13, he was taken under the wing of a college art professor for three years. This early mentoring laid the foundation for his drawing and painting skills and led him to study at the Atelier Lack and the Minneapolis College of Art and Design. He has attended pivotal workshops by both David Leffel and Sherrie McGraw and counts them, alongside Chardin, Rembrandt, and Wyeth, among his artistic influences.

Currently, Legg resides in the foothills of the Missouri Ozarks with his wife and three children. He paints daily in his studio.

**Jeffrey Watts OPAM  
Encinitas, California**

Jeffrey is a southern California native. Growing up in rural San Diego county with an artist father, Watts demonstrated an early aptitude for the visual arts. But it was competitive sports that held his interest as a teenager. After an injury cut short his budding career in professional cycling, Jeff turned his focus back to art, enrolling at the California Art Institute in Calabasas. Watts was soon invited to teach at the institute as he began working as an illustrator in the movie industry. However, Watts' goal was to become a full-time easel painter, which drew him back to San Diego where he started

a life-drawing and painting studio known as Watts Atelier of the Arts. His aesthetic sensibilities have always been grounded in 19th century European and Russian figurative art. The Atelier allows him to work constantly from the live model, infusing his work with traditional principles and discipline. Recently, Watts' work has been compared to that of Nicolai Fechin, an influence he is quick to acknowledge. "I never tire of looking at the work of Nicolai Fechin" Watts says. "It is the perfect combination of control and chaos."

In addition to being a Master Signature member of Oil Painters of America, Jeffrey is a Signature Member of

the Laguna Plein Air Painters Association, an Artist Member of California Art Club, and holds membership in the Portrait Society of America.



## CONGRATULATIONS TO OPA'S NEW 2006 SIGNATURE MEMBERS

Seventeen talented artists join the ranks of Signature Membership status. Signature membership may be conferred to an artist of exceptional merit who is a member in good standing and who has exhibited in at least three OPA National

Shows. The Signature Member Advisory Committee, comprised of three Master Signature members, is charged with reviewing candidates' applications for this status.

Congratulations to the following members on such a well deserved honor.

Tom Bluemlein OPA – Ft. Mitchell, Kentucky  
Mitch Caster OPA – Denver, Colorado  
Arturo Chavez OPA – Placitas, New Mexico  
Bonnie Conrad OPA – Woodland Hills, Utah  
Don Dernovich OPA – Culbertson, Nebraska  
Daniel Desmond OPA – Torrance, California  
Richard Dziak OPA – Marblehead, Ohio  
Wendy Higgins OPA – Santa Fe, New Mexico  
Nancy Howe OPA – East Dorset, Vermont

Jin Huang OPA – Rowland Heights, California  
Dianne Massey Dunbar OPA – Centennial, Colorado  
M. Kathryn Massey OPA – Indianapolis, Indiana  
Betty Nance Smith OPA – Los Alamos, New Mexico  
Niles Nordquist OPA – Escondido, California  
Craig Srebnik OPA – Somerville, Massachusetts  
Chui Wang OPA – Verdun, Quebec, Canada  
Todd Williams OPA – Siloam Springs, Arkansas

## CRITIQUES ARE NOW AVAILABLE

OPA is now offering a critique service thanks to the many wonderful Signature and Master Signature members who have volunteered to help us with this endeavor. If you would like to have your work critiqued, please mail to OPA two identical discs containing 3-10 paintings of your most current work, a brief one-page bio along with a \$25 check payable to OPA. The service will also be available to non-OPA

members at a cost of \$50. One disc will be sent to one of our Signature or Master Signature members for their review and the other will be kept on file. The volunteer critiquer will review your work and provide you with constructive criticism and feedback. As you know, our volunteer critiquers are very busy, so please allow four to six weeks to receive feedback.



“Forget Me Not” by Ariana Richards won the Award of Excellence funded by Art of the West



“A Break In The Clouds” by Mark Boyle Won the Award of Excellence Best Associate Member funded by OPA

## OPA WORKS TOWARDS DIGITAL SUBMISSIONS

One question we hear a lot of these days is “when is OPA going to accept digital on-line submissions?” And the answer is soon! OPA is working very hard to bring that feature to its members. We are currently in the process of reviewing several different options - whether it be outsourcing to

a service or having it developed exclusively for OPA. We are confident that this option will be available by year-end. Details will not be finalized prior to the printing of the Central and Western Regional prospectuses, so please plan on submitting for these regional shows in the usual manner.



## NOTES FROM YOUR BOARD OF DIRECTORS

Increase in Regional Awards – The Board of Directors has approved an increase in the Regional Awards as follows: Best of Show from \$2,000 to \$3,000; Award of Excellence-Best Master Signature Member from \$1,500 to \$2,500; Award of Excellence – Best Signature Member from \$500 to \$1,000; and Award of Excellence – Best Associate Member from \$500 to \$1,000.

The Board of Directors has put together a membership survey that will be sent to all members in the next few weeks. The Board believes that the results of the survey will provide a more accurate picture of the composition of our membership which is extremely important for the continued growth and success of the organization. We ask that you please take a few minutes to fill out and return the membership survey which you will either be e-mailed or mailed to your home. You can also download a copy of the survey off of our website at [www.oilpaintersofamerica.com](http://www.oilpaintersofamerica.com).

The Board of Directors has enthusiastically agreed to return to Dana Gallery in Missoula, Montana for its Seventeenth National Juried Exhibition, May 2 – June 22, 2008.

The Board of Directors wants to thank the Signature and Master Signature members who have volunteered to assist with critiques throughout the coming year. Without your help this would not be possible and we greatly appreciate your time and effort. Also, thanks to Board Member, Ken Cadwallader OPA, for agreeing to Chair the Critique Committee.

The Executive Committee is currently in the process of reviewing proposals for an updated website. A decision should be made within the next few months at which time changes to the site will begin.

### ANNUAL BUSINESS MEETING

You are invited to attend the Annual General Business Meeting of OPA on Saturday, May 12, at 8:00 a.m. at the Fredericksburg Inn & Suites, 201 S. Washington, Fredericksburg, Texas. This is your opportunity to meet the Board of Directors, learn more about OPA activities, participate in the annual election of Directors, ask questions and offer suggestions. All members are welcome and encouraged to attend. Board members are elected for staggered two-year terms. The following slate of candidates will be submitted for election this May.

**Neil Patterson OPAM** is an internationally acclaimed artist and workshop instructor. He has been among the “Top 100” and “Top 200” in the Arts for the Parks competition on several occasions. Neil resides in Alberta, Canada. He joined the Board in 2002 and currently serves as the Chairman of the Signature Advisory Committee and Co-Chair of the Gallery Selection Committee.

**Betty Schmidt** joined the Board in 1998 and has served in several positions including Secretary/Treasurer, Vice President, and President. Betty currently serves as Secretary/Treasurer. Oil Painting became her primary interest after retirement as Finance Director of the City of Park Ridge, Illinois in 1993. She has participated in numerous art shows locally and nationally.

**Scott Tallman Powers** joined OPA’s Board of Directors in 2004. He is a graduate of Chicago’s American Academy of Art and The Palette & Chisel Academy of Fine Art. Scott serves as OPA’s Show Demonstration Coordinator and is an integral part of the National Show, working with the

many volunteer artists participating in the show, as well as heading up the plein air painting events.

Immediate Past President, **Zhiwei Tu OPAM** has been a member of OPA since 1993 and joined the Board of Directors in 2000. Tu is recognized internationally for his figurative paintings. He has won many awards, including the American National Award at the 1998 OPA exhibition.

### SCHOLARSHIP APPLICATIONS

This year the Shirl Smithson Scholarship will be awarded to four OPA members with \$500 each to be used at a workshop on representation oil painting.

Suggested locations include Barnsite Art Studio & Gallery, Fechin Art Workshops, the Scottsdale Artist’s School, and the Fredericksburg Artists’ School.

By December 1, 2007, potential recipients should submit a written request together with an artist’s statement, artist’s resume and six representational slides of his/her work. The request should be sent to the OPA General Office and designated “Scholarship Application.”

### 3<sup>RD</sup> ANNUAL GREAT PAINT OUT

If you are interested in coordinating a Paint Out in your state, please send us an e-mail for more information. This is a great opportunity to network with your peers. Paint Outs should take place during the months of September, October, and November. Please e-mail: [mail@oilpaintersofamerica.com](mailto:mail@oilpaintersofamerica.com) or call 847-934-1721.

## PAINTING OUR FUTURE

### NEWS BRIEFS AND SPECIAL OCCASIONS

A painting by OPA member **Cody DeLong** was chosen for inclusion in a 'coffee table' style book entitled - Plein Air New Mexico, The Jack Richeson Fine Art Series, Volumn One. The painting chosen is called "View from Chicken Point" and is featured on p.24 of the book which was recently released.

In October, **Elizabeth Pruitt** won "Best Still Life" at the National Oil and Acrylic Painters' Society 2006 "Best of America" exhibit. The museum that hosted the event also purchased her painting "Roses in Jade Jar with Cantaloupe" for the permanent Collection. In addition, she is being featured in American Artist Magazine in the December issue for her still lifes.

**Carol Swinney** was just selected as one of four new Signature Members of American Woman Artists (AWA). This exclusive group of contemporary women artists encourages promotional and educational opportunities for women in the visual artists.

Congratulations to **Joseph Gyurcsak** for his eight page feature article in the October 2006 American Artist Magazine entitled "Painting Interior Light."

**Grace Schlesier's** image titled "Return of the Swallows" (a painting

of Mission San Juan Capistrano) will be appearing on the cover of United Airline's Sky West in-flight magazine for Delta Airlines. The magazine will also be featuring a story of her art in the same March/April 07 issue.

**Kimberly Dow's** painting "Allison" is featured on the cover of the November 2006 issue of Southwest Art Magazine, as well as an article about her figurative work inside - and another painting entitled 'Pensive'.

Congratulations to Minnesota OPA member **Rick Hansen** on his feature article in the February 2007 issue of American Artist Magazine. The article will illustrate Rick's painting process.

**Linda Volrath** was awarded the "Helen DeCozen Award for a Floral" at their 2006 Grand National Exhibition held in New York in November, 2006. This is Linda's second national award in the last two years. She won the "Founders Award for Painting" at the American Academy of Equine Art's 2005 Fall Annual Open Juried Exhibition in Lexington, KY.

**Yvonne Steinbach's** painting, "Right Of Way", was juried into Paint America's Top 100 Competition, and was awarded the Top 50 Mini paintings in

the nation for outstanding qualities and depiction of America. Her other two paintings, "Yellowstone Falls" and "China Cove" were juried in as California's top 50 state finalists, before moving on to the national finals.

Congratulations to the following OPA members who were selected as new 2007 Signature members in Rocky Mountain Plein Air Painters: **Carol Jenkins, Neil Patterson, and David Schwindt**. New members in the group that also belong to OPA include: **Pang Yen Chou and Doug Martin**.

**Scott Harding** of Warrenville, Illinois was selected to receive the John Collins Memorial Award for his oil painting entitled "Figure in White" at the American Artists Professional League's Grand National Exhibition.

Congratulations to California's **Tony Pro** who was commissioned to paint the late Senator Rose Anne Vuich in commemoration of her many year's of public service in the State of California. Tony was selected from among many California artists who were vying for this prestigious honor.

**Stephen Sanfilippo's** work will be profiled in the San Francisco/Tri-Valley Area's "110° Magazine", February 2007 issue (110mag.com).

#### CORRECTION:

OPA regrets an error in the last newsletter. Eastern Regional Award winners David Lupes and Cindy Youse's paintings were inadvertently reversed. We sincerely apologize for this error.



David Lupes "Trempealeau River, February"



Cindy Youse "The Creek Bed"

## DATES TO REMEMBER

**December 1** – Deadline for submission for 2008 Shirl Smithson Memorial Scholarship.

**May 31** – Deadline for submission for Signature membership status. Minimum requirement is having been juried into three OPA National Exhibitions.

**September 1** – Deadline for submission for 2007 Master Signature membership status. Minimum requirement is current Signature status.

### National Shows

**May 11 – June 9, 2007:** Sixteenth Annual National Juried Exhibition at Whistle Pik Galleries, Fredericksburg, Texas. Juror of Awards: Quang Ho OPAM. Deadline was January 19, 2007.

**May 2 – June 22, 2008:** Seventeenth Annual National Juried Exhibition at Dana Gallery, Missoula, Montana.

**May 1 – May 31, 2009:** Eighteenth Annual National Juried Exhibition at Sage Creek Gallery, Santa Fe, New Mexico.

### Regional Shows

**September 16 – October 15, 2007** Western Regional “Miniature” Exhibition at Waterhouse Gallery in Santa Barbara, California. Deadline for Submissions: Tuesday, June 5, 2007. Size Dimensions: 11” x 14” Juror of Awards: Calvin Liang OPAM

**September 30 – November 10, 2007** Central Regional Exhibition at Southwind Gallery in Topeka, Kansas. Deadline for Submissions: Tuesday, June 19, 2007. Size Dimensions: 24” x 36” Juror of Awards: Jeff C. Legg OPAM

**September 13 – October 12, 2009** Western Regional “Miniature” Exhibition at Waterhouse Gallery in Santa Barbara, California. Size Dimensions: 11” x 14”

**Please Note: Due to unforeseen circumstances, the location of the Eastern Regional Exhibition has been changed. Details for the 2007 Eastern Regional Exhibition will be announced shortly.**



---

**OIL PAINTERS OF AMERICA**  
**Representational, Inc.**

Post Office Box 2488  
Crystal Lake, IL 60039-2488  
General Office Tel and Fax: 815-356-5987  
Executive Office Tel and Fax: 847-934-1721  
Web: [www.oilpaintersofamerica.com](http://www.oilpaintersofamerica.com)

PRESORTED  
**FIRST-CLASS MAIL**  
U.S. POSTAGE  
PAID  
Algonquin, IL 60102  
Permit No. 65