

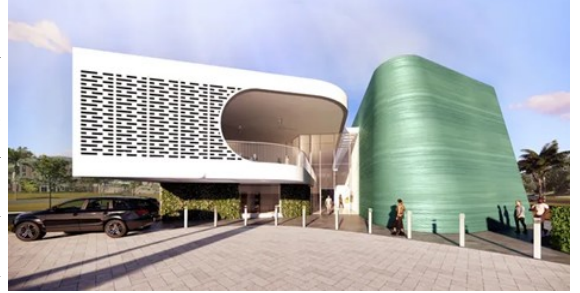


# OIL PAINTERS of AMERICA®

Dedicated to the Preservation of Representational Art

## Presents The Thirty-fourth Annual National Juried Exhibition of Traditional Oils

Oil Painters of America is thrilled to announce that we will be the premier event at the newly opening Herrig Center for the Arts in Bradenton, Florida. Our Thirty-fourth National Exhibition and Convention will take place May 28 through June 27, 2025, with convention activities beginning on Tuesday, May 27 with the Wet Paint Competition, and end on Sunday, June 1. The opening reception for artists, collectors, the public and the press will be held on Friday, May 30 from 5:30-7:30 pm, followed by the awards and recognition ceremony. As in the past, convention activities will include talks and demos as well as the entertaining Mystery Miniatures competition. Exhibitors' tables will also be present for you to view new items and stock up on supplies. Our goal is to assemble the finest display of representational oil paintings by artists from throughout North America. The focus in the jurying process will be to select paintings that show the highest quality in draftsmanship, color, and composition, emphasizing a diversity in representational style and subject matter.



The total national awards will be approximately \$100,000 in cash and merchandise, including a \$25,000 Best In Show. The Exhibition Juror of Awards will be Patrick Saunders OPAM. The Wet Paint Juror of Awards will be Todd Casey. Artists eligible to compete are citizens - both natural born or otherwise - of the continent of North America who are 2025 OPA members. Most nonresident aliens who currently live on the continent of North America are also eligible. Please see eligibility details on the OPA website.

### *Entry Guidelines*

#### **SUBMISSIONS DUE: Saturday, March 1, 2025**

- Canvas size: Maximum size not to exceed 1,200 square inches (unframed). Example: 30" height x 40" width = 1,200 sq. in.
- Maximum entries three (3). However only one (1) painting may be accepted.
- Paintings must be created on one singular flat substrate and framed and wired for hanging. Multiples are unacceptable – i.e., diptychs, triptychs.
- The substrate must not exceed the maximum size set forth in the prospectus. Be sure to read each prospectus carefully, as the acceptable size of the substrate changes depending on the gallery/museum.
- Copyright infringement of any kind is unacceptable. It is unethical and against OPA policy for artists to submit work created from another person's drawing/painting/photo or other artwork. Purchased reference material that transfers copyright to the artist is unacceptable.
- Digital apps and programs may be used for cropping your reference photos, etc., but no digital, mechanical, photo, or other transferring to the substrate of any kind is acceptable. You must draw and/or paint the image on your substrate yourself.
- Your submission must be originally conceived: your own reference, your own drawing, your own concept and must have been self-painted.
- No direct copies of stock images, historic photos, or of any reference to which you do not hold total copyright are allowed. You must be able to provide signed documentation of total copyright should OPA request.
- Paintings created in an instructional setting, including but not limited to workshops and art classes are not considered original artwork. A painting created from a group photo shoot set-up by another artist is not considered original artwork. Paintings created in an open studio where artists share the model are acceptable provided there was no instruction being given of any kind.
- Painting must have been created within the last 3 years.



- An artist may submit a painting for a National Exhibition that has previously been accepted into an OPA Regional Exhibition, Salon or entered in OPA's Online Showcase.
- An artist may not submit a painting for a National Exhibition if it has previously been accepted into another OPA National Exhibition.
- The artist retains copyright to his/her image(s). However, accepted images do become part of OPA archives and may be used for future OPA event promotion.
- All work must be for sale. No NFS. Paintings that do not reflect the artist's current pricing structure may be disqualified from the competition.
- An artist who withdraws an entry after acceptance into the exhibition shall not be eligible to enter any OPA exhibitions for the next two years.

## Substrate and Framing Guidelines

**ACCEPTABLE SUBSTRATES:** Any primed, smooth, flat substrates including: primed canvas or linen, stretched or on a panel, wood, gesso board, acrylic gessoed dibond, aluminum, aluminum composite panel. Acrylic primer is acceptable. Oil primed paper is acceptable if adhered with archival adhesive to a proper archival substrate. Paintings should NOT require being placed under glass.

**UNACCEPTABLE SUBSTRATES:** Any textured surface including decorative copper, tooled aluminum, natural stone, barn wood or three-dimensional objects. A substrate containing any printed image or photograph is prohibited regardless of whether it is your own or someone else's image/photograph.

**ACCEPTABLE FRAMING:** All paintings must be framed and wired for hanging. When framing deep-edged paintings (museum/gallery wrap canvas or deep board), the frame must be of adequate depth that the substrate does not extend more than half an inch beyond the back of the frame. Floater frames are acceptable for paintings on museum/gallery wrap canvas or deep board panels.

**FOR A COMPLETE LIST OF ACCEPTABLE AND UNACCEPTABLE PAINTING CRITERIA, PLEASE VISIT THE OPA WEBSITE. Questions should be emailed to: [mail@oilpaintersofamerica.com](mailto:mail@oilpaintersofamerica.com), or call 815-356-5987.**

### Entry Information

#### Online Submissions — Deadline: Saturday, March 1

Electronic applications will be accepted beginning Friday, November 1, 2024 through Saturday, March 1, 2025. Maximum canvas size may not exceed 1,200 square inches (unframed). Maximum file size is 5mb. Please upload a JPG, JPEG, PNG or HEIC with a filename that only contains alphanumeric characters. The minimum size for image uploads is 1400 pixels (px) in the longest dimension. However, for best results we recommend your image size be closer to the maximum size of 4000 pixels in the longest dimension.

To submit your electronic application and images, please go directly to: <http://www.oilpaintersofamerica.com> and look for OPA's 2025 National Exhibition.

#### Jurying Fees

The jurying fee for entries is: first painting is \$35.00, second painting is \$15.00 and third painting is \$10. Only one painting can be accepted. Electronic payment may be made by credit card or through Stripe. **No e-checks will be accepted.**

#### Membership

You must be a paid member through December 31, 2025 at a cost of **\$80.00**. If you are not a member of OPA you must apply and be accepted before the system will allow you to enter the exhibition. To apply for membership go to the OPA website. If you are a renewing member and have not paid your dues for 2025 the system will not accept your exhibition entry. To renew your membership, go to the OPA website.

#### Sales Commission

Artists will receive 50% of sale price with the other 50% going to ArtCenter Manatee and OPA. Please take this into consideration when setting your price. All work that is submitted must be for sale. No NFS. Paintings must be priced in accordance with the artist's current pricing structure.

#### Delivery and Return of Accepted Work

**Delivery for Local Artists:** Deliver uncrated paintings to ArtCenter Manatee on Friday, May 23, 2025, 9:00 am to 12:00 pm. Hand delivered work must be picked up on Saturday, June 28, 2025, 9:00 am to 12:00 pm.

**Out of Town Artists:** ship to ArtCenter Manatee, 209 9th St. West, Bradenton, FL 34205 to arrive between May 5 and May 16, 2025.

**Handling Fee:** Out of Town Artists must pay a \$25.00 fee online prior to their painting being hung. This fee covers the expense of uncrating, storage of crates, re-crating and contacting your shipper for return. Artist may elect to include a return shipping label with their painting OR may email the label directly to Mark Arts, Inc. **OPA will waive the uncrating fee for artists who use a commercially manufactured artist's/strong box such as a StrongBox™ by Airfloat Systems, or similar brands, like Masterpak, Uline, or a FedEx Premium Art Box (not a FedEx Large Frame Box).** NOTE: Home Depot boxes are NOT included in the list of boxes for which the fee will be waived. Artists who do not use one of these special boxes are required to remit the \$25 prior to hanging of the painting. Strong boxes will be returned to the artists at the conclusion of the show at the artist's expense. **PLEASE, NO WOODEN CRATES!**

Shipments from OUTSIDE the US must be shipped "FREE DOMICILE" or will not be accepted.

**Notification posted on OPA website:** Jury results posted on OPA website March 22, 2025.

### Calendar Checklist

**Saturday, March 1**  
Deadline for submissions

**Saturday, March 22**  
Acceptance notification posted on the OPA website

**May 5 through 16**  
Shipped artwork to arrive at ArtCenter Manatee

**May 23, 9:00 am-12:00 pm**  
Hand delivered artwork to arrive at ArtCenter Manatee

**May 27 through June 1**  
National Convention

**Friday, May 30**  
Opening Reception: for collectors, press, exhibiting artists and the public from 5:30 pm to 7:30 pm

Awards & Recognition Ceremony immediately following reception

**May 30 through June 27**  
Length of time show will be open for viewing. See below for exhibition hours

**June 28, 9:00 am-12:00 pm**  
Local Artists: removal of paintings during this period. If not removed a storage fee will be charged.

### Gallery Hours

Mon., Fri., Sat.  
9:00 am - 5:00 pm

Tue., Wed., Thur.  
9:00 am - 6:00 pm

Sun.  
Closed

### Liabilities and Responsibilities

*Oil Painters of America and ArtCenter Manatee will not be responsible for loss or damage of any artwork, no matter what the cause. By submitting artwork to this exhibition, each artist will be deemed to have concurred with this agreement. Artists pay for shipping both ways. We suggest that you provide insurance to cover the full value of the artwork while in transit.*

**Good Luck and Good Painting!**